



X-TREME SCUBA

TECHNICAL DIVE CENTER

DIVE LOG

Date July 22, 2007

Location

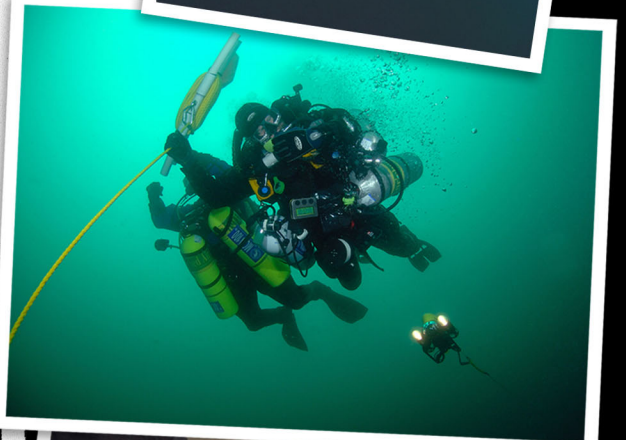
Wreck, Triple Crown, 8 miles SE Santa Barbara Harbor.

Conditions

Flat seas, no current, overcast, air temp 73° F, water temp 50° F at bottom, 64° F above 50 fsw, max depth 270 fsw.

Comments

Wreck, M/V Triple Crown, #516 480, drilling rig and handling supply ship, sank 0345 PST on 25 Nov. 1968. Length 159.5 ft. Wreck located using 2 VideoRay ROVs and Blue View Technologies imaging sonar. Mike and I used ROV tether for down line direct to wreck. Spectacular visibility 30 to 40ft. Did not need or use lights. Approached wreck at port bow; compass heading of 75°. Large search light located at bow, very good condition. Large wheelhouse at bow in good condition. Proceeded to wheelhouse which is completely intact. Left bottom at 26 mins. Total run time to surface 124 mins. Great dive!



For more pictures and video go to www.xtremescuba.com

Photos by Joe Dovala

- Triple Crown Charters
- Sept 16, 30
 - Oct 14, 28
 - Nov 11
 - Dec 16

Full Service Advanced & Technical Dive Center
Serving Santa Barbara, Ventura & LA Counties

3923 Market Street
 Ventura, California 93003
 805.642.0477 info@xtremescuba.com
www.xtremescuba.com